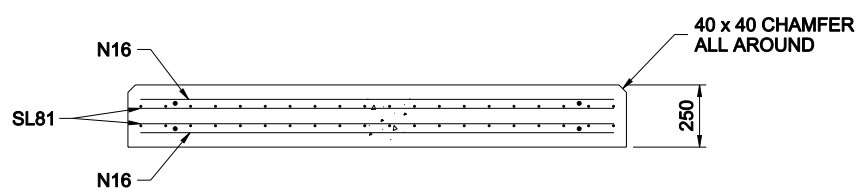
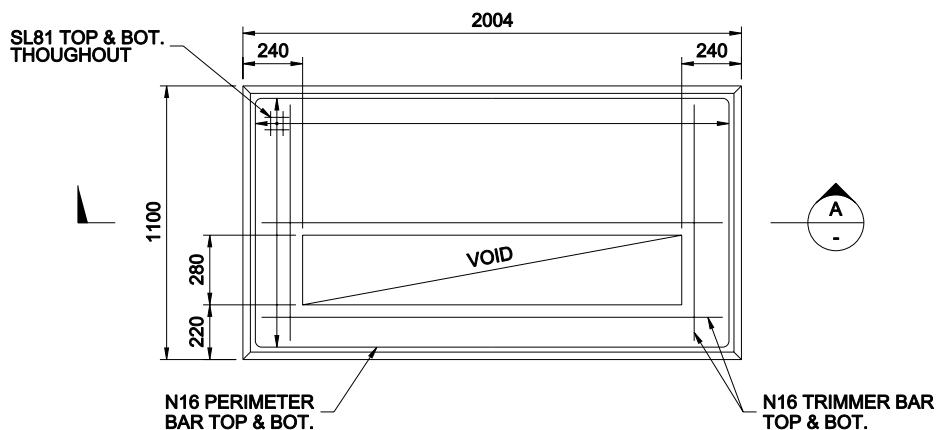


CAUTION : Printed document is uncontrolled.





NOTES:

1. CONCRETE SHALL BE N40 TO AS 3600 & AS 1379. THE CONTRACTOR SHALL PROVIDE ALL RECORDS & REPORTS OF TEST RESULTS AS REQUIRED BY AS 1379 TO VERIFY CONCRETE STRENGTH HAS BEEN OBTAINED.
2. WHERE FOUNDATION SLAB IS TO BE USED IN EXTREMELY POOR OR WET SOIL, A SPECIFIC DESIGN SHOULD BE PERFORMED TO MEET INCUMBENT CONDITIONS.
3. THESE DRAWINGS SHALL BE READ IN CONJUNCTION WITH THE SPECIFICATION, MECHANICAL, CIVIL AND RELEVANT ENGINEERING STANDARDS, DOCUMENTS AND WITH OTHER SUCH WRITTEN INSTRUCTIONS AS MAY BE ISSUED.
4. ALL WORKMANSHIP AND MATERIALS SHALL BE IN ACCORDANCE WITH THE SPECIFICATIONS AND AS 3600.
5. DURING CONSTRUCTION THE RESPONSIBLE CONTRACTOR SHALL MAINTAIN THE STRUCTURE IN A STABLE CONDITION AND NO PART SHALL BE OVERSTRESSED.
6. ALL DIMENSIONS WHICH TIE INTO OR OTHERWISE RELATE TO EXISTING STRUCTURES SHALL BE VERIFIED ON SITE PRIOR TO THE START OF CONSTRUCTION BY THE CONTRACTOR.
7. DO NOT LAP MESH. MIN LAP LENGTH FOR N16 DEFORMED BARS SHALL BE 600mm.
8. FOR EARTH GRID DETAILS REFER TO KS-344.
9. FOR CONDUIT DETAILS REFER TO KS-345.
10. FOR FOUNDATION DETAILS REFER TO KS-346.
11. TOP & BOTTOM REINFORCEMENT IN SLABS SHALL BE SUPPORTED ON APPROVED PLASTIC TIPPED CHAIRS, IN BOTH DIRECTIONS AT MAXIMUM CENTRES OF: 900 FOR 16 DIA. BARS, 750 CENTRES FOR MESH.
12. CONCRETE FINISH SHALL BE CLASS 3 TO AS3610.
13. NO REINFORCEMENT SPLICES SHALL BE MADE IN POSITION OTHER THAN THOSE SHOWN ON THIS STRUCTURAL DRAWINGS.
14. CLEAR COVER TO REINFORCEMENT (INCLUDING FITMENTS) SHALL BE 50mm.
15. FOR PRECAST CONCRETE BASE LIFTING DETAILS REFER TO KS-348.
16. UNLESS SPECIFIED UNABBREVIATED AS 4671, ALL REINFORCEMENT ON THIS PROJECT IS DESIGNATED AS FOLLOW:

SYMBOL	DESCRIPTION	TYPE
SL	MESH - SQUARE GRID	D500L TO AS 4671
N	DEFORMED BARS	D500N TO AS 4671

DESIGNATION EXAMPLE

SL81	REINFORCING MESH	D500L 8Ø RIBBED BARS @100CRS
4-N16-200T	DEFORMED BARS	D500N 4 No. 16Ø BARS @ 200 CRS TOP

ALTERATIONS	 <b>TasNetworks</b>		TasNetworks PTY. LTD. ABN: 24 167 357 299		© COPYRIGHT - TASNETWORKS PTY. LTD. NO PART OF THIS DRAWING MAY BE REPRODUCED, STORED IN A RETRIEVAL SYSTEM IN ANY FORM, OR TRANSMITTED BY ANY MEANS WITHOUT PRIOR PERMISSION OF TASNETWORKS.	
	DIMENSIONS ARE IN MILLIMETRES. UNLESS OTHERWISE STATED.		TITLE  SWITCHING STATION PLINTH DETAIL 3-4 RMU			SCALES  1:30
	DRAWN	C5 PRO-SOLUTIONS				SIZE A4
	CHECKED	G.HALL	REVISION			
	APPROVED DATE	 DAVID ELLIS 05/02/2016	KS-341			A

16/12/2015